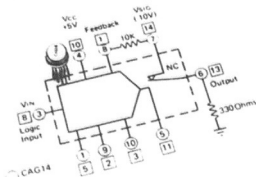


## FET analog gate turns on fast

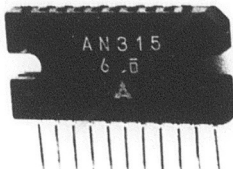


Teledyne Crystallonics, 147 Sherman St., Cambridge, MA 02140. Gregory Kizik (617) 491-1670. \$4.2 (1-49 qty), \$35 (50-99 qty); stock.

With a turn-on time of 20 ns, the CAG14 FET analog gate is said to be five times faster than comparable monolithic analog switches. The unit is an spst switch and driver circuit, and features a voltage-constant on-resistance of 35  $\Omega$  (typical) and guaranteed operation over the entire MIL temp range.

CIRCLE NO. 330

## Power audio amplifier delivers up to 5.5 W

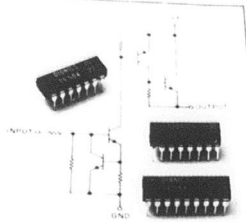


Energy Electronic Products, 6060 Manchester Ave., Los Angeles, CA 90045. Tom Nixon (213) 670-7880. \$2.50 (100 qty); stock.

Housed in an 11-pin single in-line package, the AN315 audio power amplifier delivers 5.5 W. The unit consists of a differential pre-amplifier, a drive amplifier, a ripple filter, an automatic operating point stabilizer and a quasi-complementary power amplifier circuit. Features of the AN315 include a 53-dB closed-loop gain and overload and short-circuit protection. The amplifier has a THD of 1.5%, maximum and a noise voltage of 4.5 mV, max.

CIRCLE NO. 331

## Chips drive large fluorescent displays

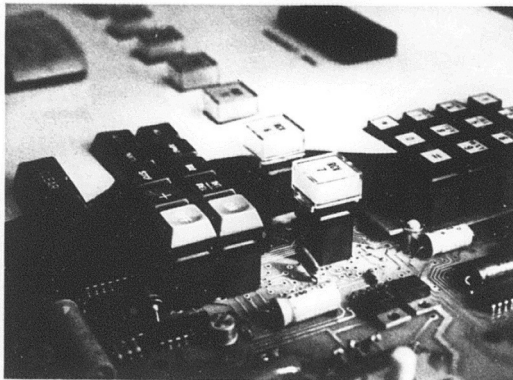


Dionics Inc., 65 Rushmore St., Westbury, NY 11590. George Seaton (516) 997-7474. DI-504, \$0.93; DI-509, \$1.10; DI-514, \$1.22 (10,000 qty); stock.

Vacuum-fluorescent displays requiring 35-V supplies can be driven directly by the DI-504/509/514 series level-shifted drivers. Both the shift level and output of each model are 50 V. Output drivers saturate at 1.5 V and 10 mA (typical). Inputs are MOS or TTL-compatible. The DI-504, 509 and 514 come in 4, 6 and 8-line versions, respectively.

CIRCLE NO. 332

## KEYBOARD SWITCHES for INSTRUMENT PANELS



Now is the time to stop hand wiring to expensive panel-mounted switches.

Mechanical Enterprises' keyswitches are available at about half the cost. And, they are self-supporting on the PC board without the need for metal sub-plates.

Our switches feature —

- Sealed contacts or inexpensive gold bar mechanical contacts
- 3/4" or 5/8" spacing, or stand-alone
- Selection of legending systems including doubleshot keytops
- Lighted models in three lens styles, all relampable from front
- Single or double pole, NO or NC
- Momentary or alternate action
- Wave solderable
- 20 million cycle life at TTL loads with guaranteed low bounce

Please phone for a free sample with keytop.



**Mechanical Enterprises, Inc.**

8000 Forbes Place Springfield, Virginia 22151 (703) 321-8282 TWX 710-832-0942

Germany - NEUMÜLLER GMBH, MUNICH / U.K. - TEKDATA LTD., STOKES-ON-TRENT / France - TEKELEC AIRTRONIC, SEVRES / Switzerland - DIMOS, AG ZÜRICH

CIRCLE NUMBER 66